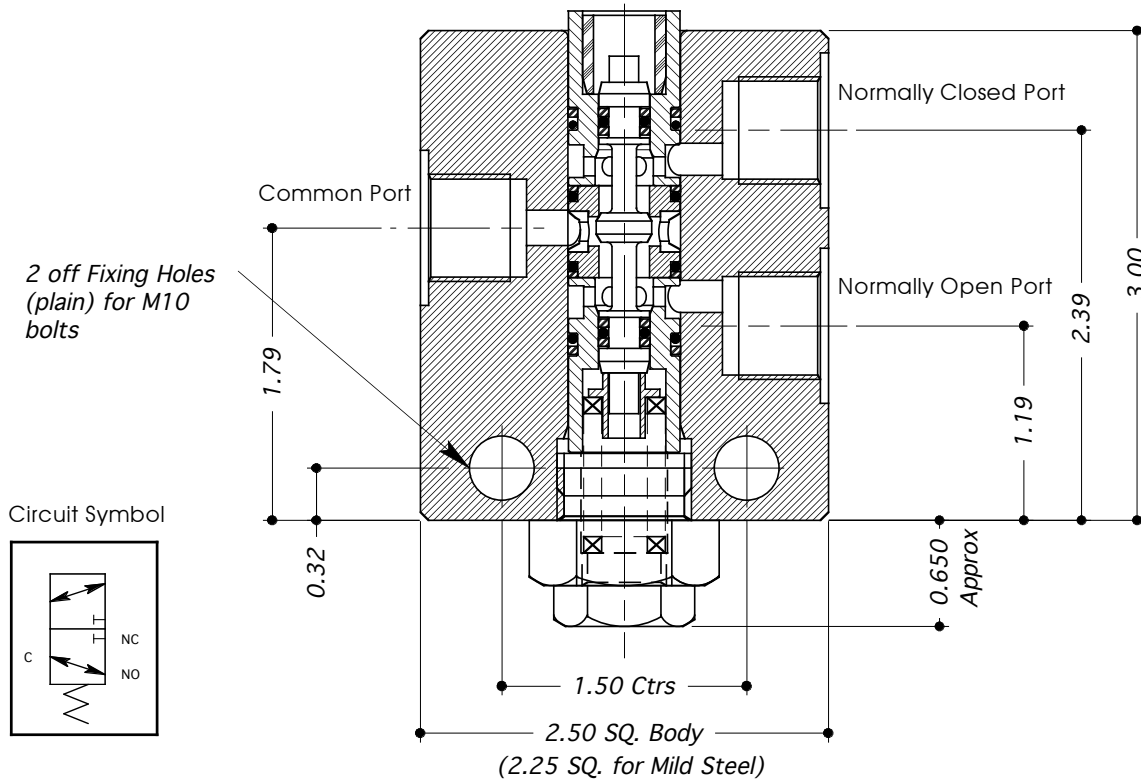


# DIRECTIONAL CONTROL VALVE TYPE: 3B37-G



- 2 POSN / 3 PORTED MILD STEEL - ENP (EN1 / 220M07) VALVE WITH ACTUATOR OPTIONS.
- BODY MATERIAL OPTIONS: STAINLESS STEEL (316 / 1.4404), ALUM. ALLOY (HE30)
- SUITABLE FOR LIQUID OR GAS USE.
- FITTED WITH "SOFT" SEATS.
- ACTUATION TYPE - SEE SECTION 12 FOR DETAILS.
- ALL DIMENSIONS IN INCHES.



| TECHNICAL SPECIFICATION        |  | ORDERING EXAMPLE |
|--------------------------------|--|------------------|
| Material Option (non-std)      | <b>A</b> = Alum .Body (HE30) <b>S</b> = Stainless Steel (316/1.4404)                       | —                |
| Valve Type:                    | <b>3B37</b>  | <b>3B37</b>      |
| Porting / Connection Options:  | <b>P</b> = BSP (Parallel) <b>N</b> = NPT (Taper)   | <b>P</b>         |
| Actuator Options               | Low Press. Pilot: Types: <b>H3</b> ( 44 to 115 psi )                                       | <b>H3</b>        |
|                                | High Press. Pilot: Types: <b>H0</b> ( 400 to 1,200 psi ), <b>H1</b> ( 1,400 to 4,000 psi ) |                  |
|                                | Mechanical: Types: <b>C0, C1, L, DL</b>  |                  |
| Soft Seated Valve:             | <b>G</b>   | <b>G</b>         |
| Max. Working Press: Liquid/Gas | <b>6,000 psi / 3,500 psi</b>   | <b>6K</b>        |
| Port Size:                     | 3/8"   |                  |
| Valve Seat Mat'l: Liquid/Gas   | Torlon   |                  |
| Seal Material:                 | Viton (other materials available by request)   |                  |
| CV Value:                      | 0.44   |                  |
| Dry Weight: (kg)               | 2.0  |                  |
| Working Temperature Range:     | -10°C to +80°C   |                  |